



**-New SPRING HOURS: 8-6 Mon. – Sat.  
starting Apr. 17: Sundays 1-5**  
**-FOUR GREAT WAYS TO SAVE @ HANNA'S !**

## April 8th E-NEWS

### The Garden Centre With More!

**More Selection • More Knowledgeable Staff • More Experience**

Discover for yourself  
& see there's more than meets the eye!

Every year, it amazes me how many people are only just discovering us *for the first time* - some even live in the neighbourhood; they didn't know we had a garden center; they thought we were 'just an orchard' or that we 'sold only apples'; or they thought we wouldn't have much in stock because they can't see much from the road. It doesn't seem to matter how much we spend, or which medium we use to advertise because it happens time and again! So, please, tell your family, friends and acquaintances - Hanna's have a garden center and that they owe it to themselves to see how much we stock because there really is so much more than meets the eye! We have a Facebook page, too, where I post things every now and then (don't want to make a nuisance of myself) and it would be great if you would LIKE us!

<https://www.facebook.com/HannaOrchardsFarmMarketGardenCentre/>

For the eight years since we added a Garden Center to our Market, we have had our own **FREE customer loyalty card**. Every purchase, of anything we sell in our market except sale items, is entered on the card and when the card is full (ten purchases) we add up the total of those purchases to give the customer a credit of 10% of that total to be used on *anything* in our Market! I

think that's a pretty good deal and I know many of you agree. Last year, however, after some consideration, we thought our customers may prefer a card that could be used at multiple businesses/merchants in Salmon Arm - and elsewhere - so we became part of **Lyoness**. Initially we had thought our loyalty card would be phased out but because not everyone was interested in the Lyoness concept and some were not online (which you have to be to use Lyoness), we continued to offer our own loyalty cards although not everyone was aware of this.

So to clear up any confusion, I'd like to reassure you that our own loyalty cards **are** available and *we will continue using them* but for those who prefer the Lyoness cards, we will also continue to honour them.

And finally, we will also honour the **Shuswap Garden Club Membership Card**. Members (show your card please) will be given a 10% discount on **plant and seed purchases and some garden related products**. (But remember, our own loyalty card is a better option because *every purchase counts* on our loyalty card - unless, of course, you only buy sale items in which case your purchases won't qualify.)

There you have it: three great ways to save at Hanna Orchards Market & Garden Center. Of course, it goes without saying (but I'll say it anyway) that you can only use one method per purchase!

But there is yet another way to save - almost all of our nursery stock and perennials are set up in our computer system to automatically provide discounts depending on how many of

that item are purchased. For example: when you purchase Emerald hedging cedars, you get a 15% discount when you purchase 10 and a whopping 25% discount when you buy 25 or more of that particular size. And most of the perennials are set up so that if you get 3 or more of that item (and after all most perennials look best when planted in multiples), you'll get a 15% discount - if they're not already on sale. And last, but definitely not least, if you need a lot of a particular variety of bedding plant, we'll give you a 15% discount when you purchase *an entire flat* (no mix and match allowed, however). We've always offered these discounts but there isn't room on most price tags for this information.

## NEW PLANT FOR 2016



**Hydrangea arborescens 'Invincibelle Spirit 11'**

This is what Proven Winners has to say about their new **'Invincibelle Spirit 11'**

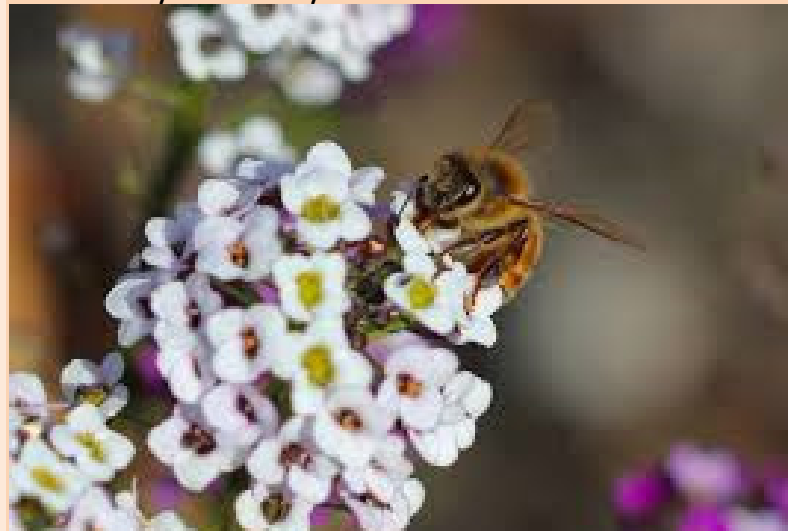
"The second generation of Invincibelle Spirit hydrangea delivers on all accounts: it has darker foliage, stiffer stems, and larger flowers that are a richer pink that ages to an attractive green. This hydrangea grows from Manitoba to Mobile, blooming every year from mid-summer to frost. It is a strong re-bloomer, and will deliver plenty of rich pink flowers through the summer and into fall."

When the original 'Invincibelle Spirit' was introduced into the trade in 2009, it was a true breakthrough in plant breeding - the first pink hardy smooth-leaf hydrangea. Since then, \$1 from the sale of each 'Invincibelle Spirit', and now 'Invincibelle Spirit 11' as well, has gone to the Breast Cancer Research Foundation. To date, in Canada and the USA, \$908,000 has been donated - and the campaign is still going strong!

## POLLINATOR-FRIENDLY GARDENS



Without doubt, one of the hottest topics on radio and television talk shows, in magazines and online is the need to address the decline of native and domestic bees throughout North America. Native plants are a good place to start when considering plants that are pollinator-friendly, incorporating them into your landscape where possible. Many favourite annual and perennial daisy-form flowers (asters, zinnias and sunflowers) attract a wide range of pollinators as do the flat-topped flowers of dill, fennel and yarrow. Other herbs such as borage, oregano, lavender and beebalm are also attractive to pollinators. But one of the best - because it's so easy to grow, cold tolerant and blooms most of the summer - is Sweet Alyssum. Plant it (and any other good pollinator-friendly plants) wherever you have a bare-spot in your yard or garden and watch as bees, butterflies, and even hummingbirds visit the sweetly fragrant blooms day after day.





Tomorrow, Saturday, we're having our annual **Orchard Mason Bee workshop at 2:00**. Mason Bees are essential for pollination of early flowering plants such as fruit trees. Please join us at 2:00 if you'd like to learn how to encourage these gentle native bees to take up residence in your garden. We have bee cocoons in stock (\$14/10) and will offer a 15% discount on bee houses and related accessories to those who attend.



One thing I have planned for the Garden Center this year is to put identifying labels in plants that are:

1. Attractive to butterflies
2. Good pollen plants
3. Native Plants
4. Attractive to Hummingbirds
5. Deer resistant

This is a work-in-progress so don't expect it to be done any time soon but I believe it will be a real asset in choosing plants for the garden.

## **WATERWISE PLANTS**

Another hot topic in the gardening world is the need for plants that are drought tolerant. Given the hot, dry, extended summers we've experienced the last two years, using plants that are water-wise makes sense. Xeriscape (not Zero-scape) gardens are built on the premise that water is a valuable commodity and must be used wisely. One of the basic principles of Xeriscape is to use plants that have similar water needs together. For example, plants that require regular watering should be planted close

to the home and to a water source. Plants that don't need as much, or any, water once established can be planted further out so you can reduce water usage. Use plants that are appropriate to your soil and climate - right plant, right place. Exemplar Horticulture - a wholesale grasses and perennials nursery - has, for several years, been using plant labels that let you know their plants are 'Smart Plants'. Look for these labels as you look for plants that will make your garden more water-smart.



## **NEW PLANTS ARRIVING DAILY!**

We've had a CRAZY week with trucks arriving daily with more and more plants - and they're not all here yet! So much has been coming in that it's been hard to keep ahead of it but the staff has been working valiantly to get stock labeled, priced and moved into place. It will take some time to get everything where it's supposed to be but if you don't see a plant you're looking for, ask if it's here (perhaps in the unloading area), still to come or if it can be ordered. Among the plants that arrived this week are some BEAUTIFUL magnolias - in bloom, different varieties and different colours. **All of our magnolias are 15% off this week!**

We have some annual bedding plants in now but more will be arriving this coming week; the greenhouse should be full of basket stuffers, pack annuals and 4" plants by this time next week. It's time to be thinking about what you're going to put

in your containers and hanging baskets this year, isn't it?

We have a good supply of early veggie bedding plants, seed potatoes and onion sets so get your garden beds ready - it's time to get these things planted. Onions must be planted early so that they have enough time to grow reasonable-sized bulbs by the first day of summer. **Onion sets are 10% off this week.**

Bareroot fruit trees are in stock. Shop early for best selection!

**IRRIGATION SUPPLIES**

Don't forget that we're your local source for irrigation supplies. Whether you're installing a new system or need to update or repair an existing one, we have the items you need (or can order them in) to get the job done.



**APPLE LANE GIFT SHOP**



If you've already stopped by this spring, you'll know we made some changes in our market to accommodate a better and larger selection of Ladies' Fashions. There too, new spring and summer stock has been arriving almost daily so come in regularly so you don't miss out. **This week all of our scarves - lots of gorgeous spring colours - are 15% off.**



**April 8<sup>th</sup> – April 14<sup>th</sup>**

**Magnolia trees.....15% off**

**Onion sets.....10% off**

**Scarves.....15% off**

**EVERYDAY Good Values:**

**Steer or Mushroom manure.....  
.....2.69ea, 10/20.00**

**Peat Moss 3.8cu. ft. bale.....14.99**

**Miracle-Gro Potting Mix  
28.3L @ 7.99  
60.5L @ 16.99**

Happy spring, happy gardening,  
*Harriet*

**HANNA ORCHARDS MARKET  
& GARDEN CENTRE**  
3181-11<sup>TH</sup> Ave. NE., Salmon Arm, BC

**Starting Monday, April 4<sup>th</sup>**  
**Open Mon.-Sat. 9-5**  
**Sundays: 1-5**  
**(250) 832 4574**

*If you are receiving this newsletter in error or would like to have your name removed from our mail-out list, please go back to the weekly email notice and click on UNSUBSCRIBE.*

Don't forget to LIKE us on Facebook:  
<https://www.facebook.com/HannaOrchardsFarmMarketGardenCentre/>